

Problems of Japanese emergency medical treatment system and suggestions to reform present situation

2724 Kyoto Municipal Saikyo High School NOH Yeji KISHIRO Akane KATAOKA Shinnosuke

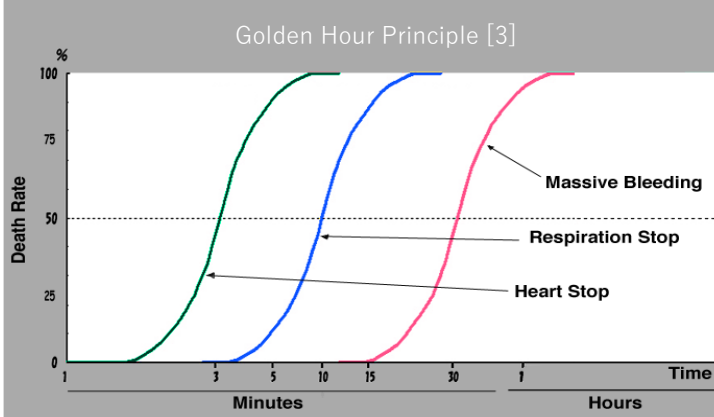
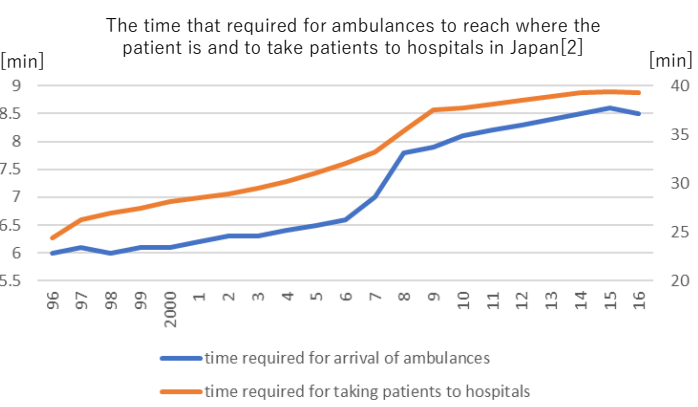
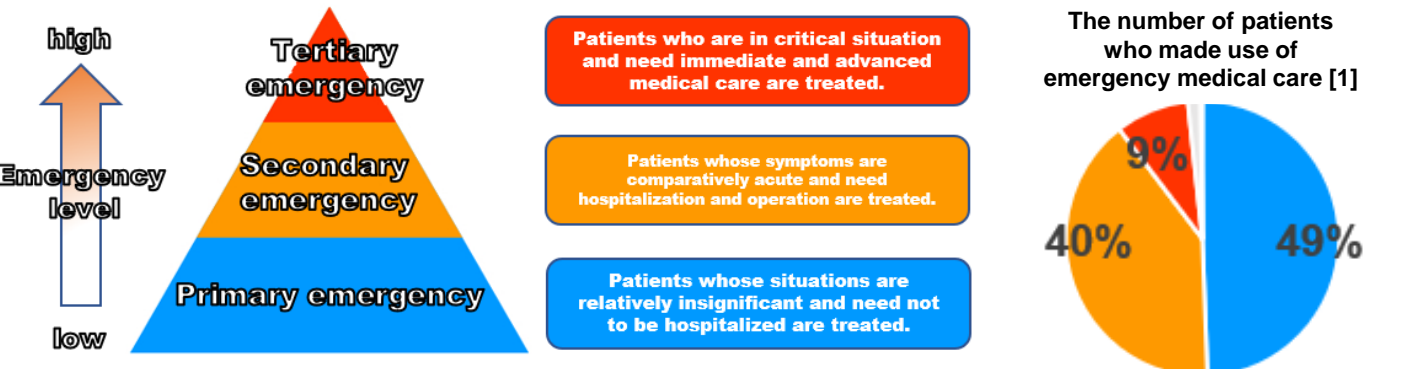
Objective

How can we reduce the time until an ambulance reaches a site and take the patients to be treated in the hospital?

Methods

- Interviewing the executives of the Kyoto Fire Department
- Actual proof from Nagoya Fire Department

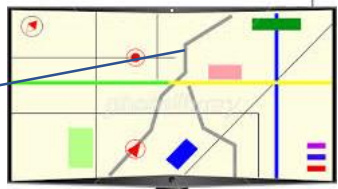
Analysis of Present Situation



Proposals and Discussion

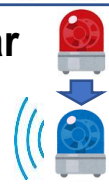
AI Navigation System in an ambulance

Showing **the best route** to carry patients by calculating and predicting the road condition using AI



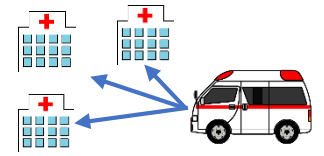
Controlling System & Switching to the specially-colored light bar

Controlling the **traffic light** to immediately go to where the patient is
Switching to the **special light bar** to let people know the urgency



Quick Appointment System

Quickly making an appointment to the available hospital
Analyzing the disease of patients using the big data



References

[1] Japanese Red Cross Society
 [2] 救急医療体制討論会報告書 Ministry of health / Ministry of International Affairs and Communications (the Fire Defense Agency) 「救急医療体制基本問題検討会報告書」, 「救急医療体制の現状と課題について」, 「平成29年度版 救急救助の現状」
 [3] 東京消防庁 Tokyo Fire Department 「緊急医療週間の実施について」