

# Aiming Partnership Construction

- the Impact of Collaborative Researches and Symposiums and Future plans

2708 Waseda University Honjo Senior High School  
Nazuna Nishikawa, Hana Watanabe, Aisu Takida, Ami Suzuki

## Abstract

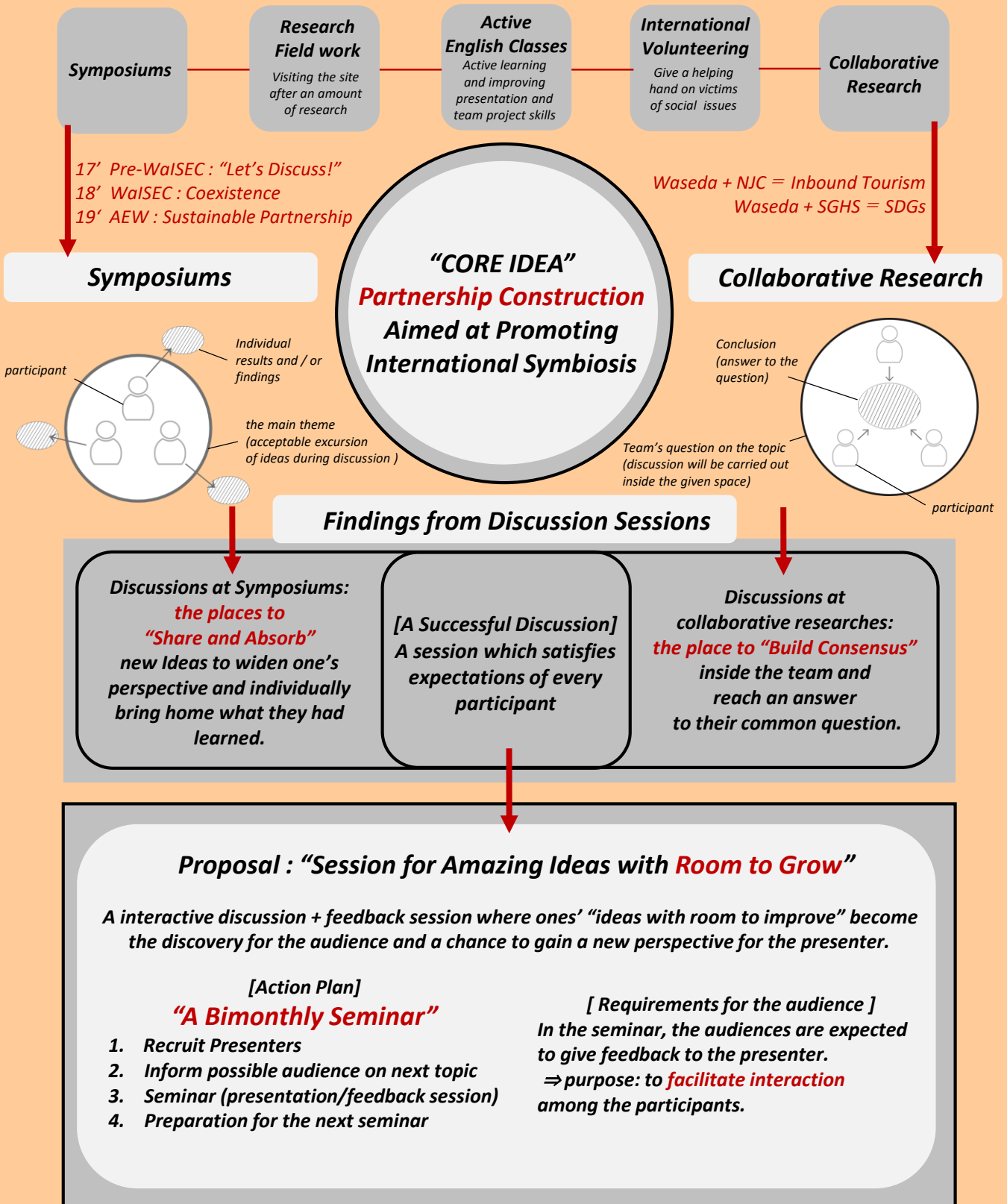
Reflecting on the past 5 years of being a part of the SGH program, we analyzed our findings and how to make use of what we learned in the future. **The ability to PLAN, IMAGINE, LEARN, JUDGE, EMPATHIZE, EXPRESS, and TAKE ACTION** : these abilities are more than difficult to acquire, but the help of SGH made the growth possible.

## Our SGH : Student-Centered Style

The “**Student-Centered style**” was the key to our successful achievements. The “**Core Idea**” became the commonly-recognized goal for all participating students of the SGH programs.

At our symposiums, we set **simple but debatable words** as the big theme.

The **HEATED DISCUSSIONS** became the most unforgettable experience for the participants .



## Conclusion

For the past 5 years we have been aiming to find **OUR answer to how we can build an equal, strong, and sustainable PARTNERSHIP**. From the number of achievements we found, we chose "**Importance of Discussion**" as our idea to share. We look forward to organizing a collaborative seminar with our domestic and international partner schools.